

FAT FENDER GARAGE

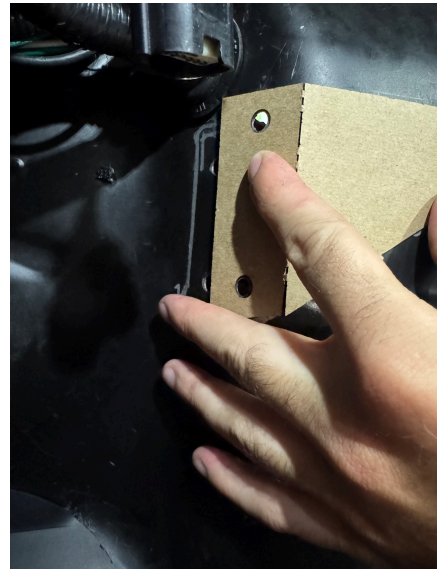
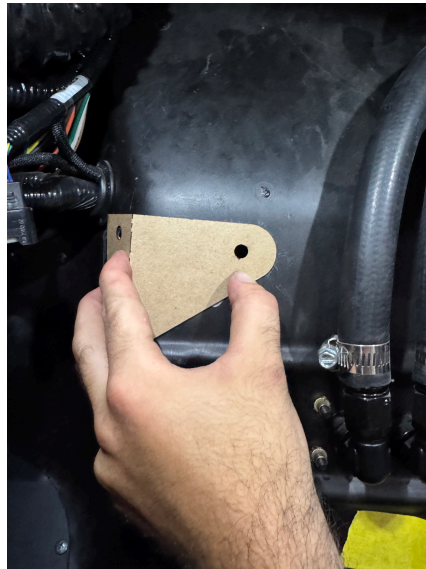
1948-52 Coyote Accelerator Pedal Mount

Please note: Installation does not require engine removal, but we recommend installing your pedal bracket before the engine

Installation Instructions

1. Bracket Alignment

- Align bracket so that it fits snug around the curve in the firewall at your preferred height, mark the right side hole and draw a straight line across the top of the bracket
- Align the template to the hole and line you drew to the template and mark and drill the holes on the side

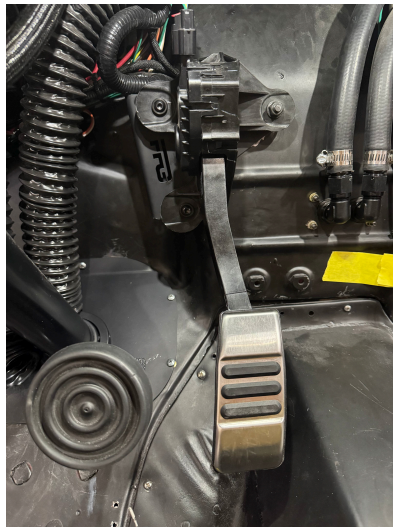
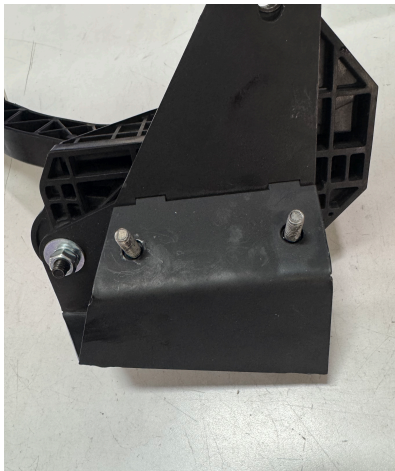


Contact Information

Fat Fender Garage
4160 E Warner Rd
Gilbert, AZ 85296
Phone: **480-621-6072**
Website: www.fatfender.com

2. Bracket installation

- Insert two studs into the threaded holes on the bracket and secure with red Loctite
- Ensure that the studs are tightened to the point where the cap nuts will fully fasten when installed
- Fasten the pedal to the bracket with the two smaller bolts on the left-hand side
- Put the two studs through the holes and have a friend hold the bracket in place while you tighten the nuts on the other side of the firewall
- Insert the third bolt through the firewall, bracket, and pedal, and tighten everything down evenly.



Ensure that your gas pedal can fully compress and is not impacting the floor or firewall at full compression before operating vehicle

Feel free to reach out to our support team with any questions or concerns